



WOODLAND

Weavers & Spinners Guild

Season 2005-06, No. 8

April 2006

Newsletter

Next Meeting

April 10, 2006
7:00 p.m.

**Margaret Windeknecht,
Weaver**

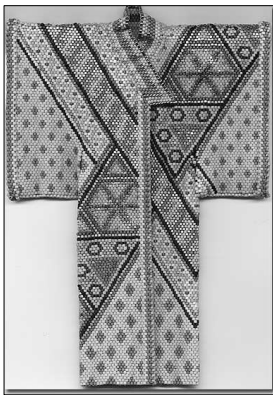
Trinity Cong. Church
2725 4 Mile Rd NW
(1-96 to Walker Exit)

TREATS

Brenda Terry
Linda Blue
Lynne Swets
Sally La France

GREETERS

Liz Oppewal



Kimono by Margaret Windeknecht

Member



Michigan
League of
Handweavers

Newsletter Editor:
Bob Meyering, 940-0621
meyr@calvin.edu
Copy deadline,
15th of the month.

My Personal History as a Weaver

with Margaret Windeknecht

Our Speaker for April 11, 2006, will be Margaret Windeknecht. Her presentation is entitled, "My Personal History as a Weaver".

Her program will include a look back over her years involved in Fiber Art with a full span of loom-controlled weaving and the study of color-and-weave as well as off-loom weaving and bead weaving.

Margaret has had her writing and fiber art published since the 1970s with 25 works published in 10 books on fiber techniques and design, including *FIBER STRUCTURES*, *FIBERARTS DESIGN BOOKS I AND II*. She has received over 70 awards in juried exhibitions. She is listed in the *WHO'S WHO OF AMERICAN ART*, *WHO'S WHO OF AMERICA*, and the *WORLD WHO'S WHO AMONG WOMEN*.

She has published seven books and numerous articles which have appeared in *Shuttle, Spindle, and Dyepot*, *Weavers*, and *Handwoven*. Papers on "Computer-aided Design for Weaving" have appeared in several conference proceedings.

For the past several years, Margaret has been working increasingly in miniature and in beadwork (coming from an early background of drawing/painting and from years in loom-controlled weaving). Her interest is to produce small, intimate works that make a statement. She believes in learning/exploring a wide range of techniques. When she has an idea or concept, she likes to have a number of choices in how to do it.

—Mary Ellen Gedris

Titles by Margaret Windeknecht as listed on Amazon.com

Creative Monk's Belt (Shuttle Craft Guild Monograph; No 30, 1977)

Point Twill With Color-And-Weave (January 1, 1990)

Creative Overshot (Shuttle Craft Guild Monograph—April 1978)

The Pinwheel: an Exploration in Color-and-Weave Design (June 1992)

Color-and-Weave (September 1981)

Color-and-Weave II (December 1, 1995)

Rosepath Motif: An Approach to Weaving Design (June 1987)

Color-and-Weave CD (CD-ROM - August 31, 2000)

Note from Inara Kalnaraups

3-14-06

Dear Friends:

Thank you so much for the colorful bouquet and the get well wishes. The beautiful flowers came home with me when I was discharged on Friday (March 10th). I am still enjoying them. Thanks again for your thoughtfulness.

—Inara

UPDATE

DESTINATION 1111 Grand Fiber Show

Featuring Fiber Artists from
Member Guilds of the
Michigan League of Handweavers
at
Destination 1111
1111 Godfrey S.W.
Grand Rapids, MI

June 21 through July 8

Wow! You would not believe how large a space 11,000 square feet of space is!

Fiber Artists are really needed to fill this huge space up at Destination 1111.

In addition to having the huge amount of hallway exhibit space, the Destination 1111 Resident Artists are arranging for us to have three locked rooms. Gerhardt Knodel will have a separate show there at the same time we will, and he will have the fourth available room space. The hallways go on and on - it is truly amazing what a gem this is. Please see the other attachment for more information on the gigantic show we will produce in June!

So, Guild members, start planning on which three pieces you are going to show in this huge exhibit (or join with friends in your guild and do a collective show) that will showcase to the world what the member guild members of MLH can do! We look forward to showcasing all our Michigan, Indiana, and Ohio guild members' work. This is a one of a kind show and a great opportunity to show the world what/who we, in MLH Member guilds, do in the fiber world!

While visiting Destination 1111 last week, a couple of the artists worked with me on advertising our show. They are publishing a brochure

advertising some of their work and we will be in that brochure. We have two pages and have the wording down for our ad, but they want to show some fiber work on the second page of our advertisement.

Pictures of Artwork needed for the Brochure!

The copy deadline for this brochure is April 3, 2006. Being out of my element here it was suggested to me to contact as many fiber artists as possible and if you have any digital prints, a J-peg or, or a PDF file of your work you could forward them to Erwin at Erwin@IdealCollective.com. Erwin, Michael, and Geary will select from the photos received and put together a beautiful color page for our second page in the brochure. They also said it would be ok to send them a CD or slides with your work on it to:

Destination 1111
c/o Erwin
1111 Godfrey S. W.
Grand Rapids, MI 49503

Please enclose a self addressed, stamped envelope if you want them returned to you.

Individual Artist Show Opportunity:

If individuals (or a group of you from a guild) would like to have a separate show in one of the three available rooms, or in a section of the hallway, please let me know by Mon-

day, April 3, 2006. Also let Erwin know at Erwin@IdealCollective.com so he can include it in the advertisement (for a fee) they are producing and advertising shows that will be on display during Convergence. Deadline is Monday, April 3, 2006 for inclusion in the brochure.

If you have no computer access, please send slides or a CD to the address above.

If you want them back also enclose a self-addressed, stamped envelope.

Special Note:

Even if there isn't time to take pictures, etc. you/your guild can still have your/its own show within this show. The possibilities are endless - Let's make this the Grandest Fiber Show ever!

Thank you for your immediate attention to these issues.

*Sincerely,
Cathy McCarthy*

Summer-Winter Weave Workshop with Norma Smayda.

Coming the last weekend of September 2006, the nationally known teacher of weaving, Norma Smayda, will come to Grand Rapids to present a workshop on the Summer-Winter Weave Structure. Following the two day workshop, Norma will be our guest speaker for our Oct. 1 guild meeting.

Right now, September seems a long way off. But with no summer meetings, plus having Convergence here this summer, the time will go quickly. So I really urge you to check your calendars (and mark them), especially if you plan to take advantage or learning about this weave structure. The workshop chair needs to know by the June meeting who will be taking this workshop. Other information needed for Norma is the number of shafts on the loom you will be using.

Please look for the sign-up sheet at our April meeting and include the information about your loom, plus a way to contact you this summer. Threading instructions will be available in August. This will give you time to order any yarns you may not have on hand & get your looms threaded.

-Linda Blue

MINUTES: MARCH 2006 GUILD MEETING

The meeting was called to order by guild president, Jackie Fisher. Special recognition was given to Bob Meyering for celebrating his sixtieth birthday. Bob's birthday response was, "At this age, it either dries up or it leaks."

The secretary's report was published in the newsletter. There were no corrections or additions to the minutes. A motion was made to accept the minutes, this was seconded and passed unanimously.

Julia Daniels, guild treasurer, provided the treasurer's report summarizing income and expenses for the month. The guild's balance for February 2006 was \$4552.13.

Mary Ellen Gedris, program chair, introduced the evening's program, JoAnne Bachelder speaking on "Drafting, Revisited." JoAnne examined the anatomy or different portions of the draft, detailed the different types of drafts: structural, industrial, profile, pattern only, and color and weave effect, and reviewed drafting methods to create something new. These included turned, blended, name and network drafts.

The evening's 50/50 drawing was Jeanne Hoin.

Show and tell participants this month included Diane VanderPol, and Mary Ippel, Towel Gamp workshop participants, Julia Daniels, Betty Christians, Liz Oppewal, Joni Rosen and Mary Ippel, and boundweave workshop participants Linda Blue, Liz Oppewal, Betty Christians, Mary Ippel and Julia Daniels.

Committee Reports

Mary Ellen Gedris, program chair, announced that the April meeting will feature Margaret Windeknecht speaking on "A Personal History as a Weaver."

Judy Pulver is coordinating weaving equipment use for the Convergence 2006 workshops. However, there were questions regarding the guild's liability for this equipment while storing it and the need for the guild to purchase several different insurance policies and riders to cover the storage and transportation of same to the convention hall. After some discussion, Brenda Terry made a motion to turn the insurance responsibility for the equipment storage and transportation back to HGA for coverage under their policy. The motion was seconded and passed unanimously.

Linda Blue, workshop chair, provided an overview of JoAnne Bachelder's towel gamp workshop. Information on other upcoming workshops, including Bryan Schneider-

Thomas' dye workshops and the Spring Fiber Retreat, was given and will also be available in the newsletter. A fall workshop on Summer/Winter weaving by Norma Smayda was announced for the end of September. More details are forthcoming.

Study Group Reports

Diane VanderPol announced that the spinning group will meet at Jayne Schafer's home two weeks from tonight.

Margaret Jager reported that the knitting group meets on the fourth Saturday of each month at Boston Square Christian Reformed Church for those wishing to join and that they have had 3 meetings so far.

Linda Blue reported that the overshot group will be meeting soon to discuss projects.

Mary Ippel reported that the clothing group has various garments under construction.

Laurie Angell reported that she has received a number of rag rug donations for Habitat for Humanity. Those wishing to weave rugs for this charity should make them approximately 28" x 48" in size.

Old Business

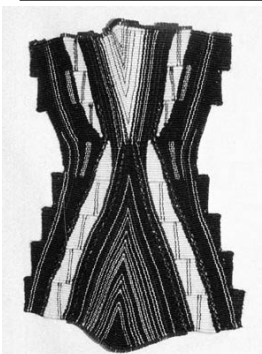
The Sales Committee presented the results of their sales review last month. Several proposals from their review were voted on at that time. However, the use and/or rental of the guild's credit card machine by individual guild members was tabled at that meeting. Following discussion on this, Bob Meyering made a motion that the credit card machine's use be restricted only to guild sponsored activities approved by the guild or by the guild's executive committee if approval time was a factor. The motion was seconded by Mary Ippel and passed unanimously.

Brenda Terry announced that Margaret Jager's science classes at Kelloggsville Christian Middle School are making silk fusion for the Convergence goodie bag bookmarks.

Announcements were made that two guild members, Jochen Ditterich and Inara Kalnaraups, were in the hospital.

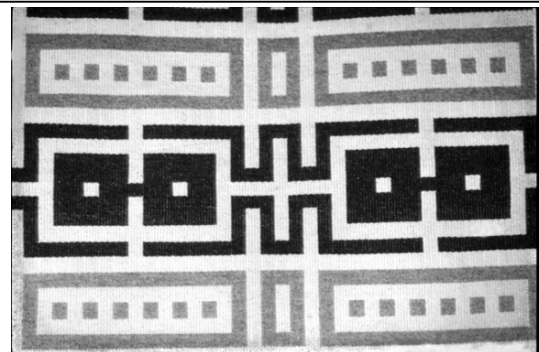
Jackie Fisher thanked the evening's hostesses and adjourned the meeting.

—Suzanne Zimmerman-DeVries



Reprise,
beaded tapestry
by Margaret
Windeknecht,
2004

Rug
by Margaret
Windeknecht



Woodland Weavers and Spinners Guild
2230 Edgewood SE
Grand Rapids MI 49546

Next Meeting:
Monday, April 10, 2006
Margaret Windeknecht
My Personal History as a
Weaver

Guild Meetings

April 10, 2006 (NOTE DATE)

Margaret Windeknecht - Personal
History as a Weaver

April 22, 2006 (see below)

May 1, 2006

Marion Marzolf and Marie Gile,
"Fascination with Fiber"

June 5, 2006

Year End Potluck

Coming up in April is the Fiber Retreat at CRC Conference Grounds on the beautiful shores of Lake Michigan. The date is **Saturday April 22** from 9:00 to 8:30. Those of you who went in October were some of the first ones to sign up. Those of you who decided to join us for the first time are in store for a relaxing day to work on whatever fiber-related project(s) you decide to bring along, plus a day of enjoying the company of others with similar interests.

Also on **April 22** is the date Bryan Schneider-Thomas has for the Dye Workshop "make-up" for our overwhelming response to his March date. Since Bryan has a limited amount of space, he likes to keep numbers of ten or under. We do have space at Bryan's for a couple more on the April 22 date.

Contact Linda Blue

NORWOOD Loom for Sale

I have a 54" Cherry Norwood 4 harness loom that I would like to sell - I have the bench and many tools. It is in excellent condition and was only used a few times. Norma Shaarda
Quality Network Rep.
Grand Rapids Operations
2100 Burlingame SW,
Wyoming MI 49509
616-246-2517
norma.shaarda@delphi.com

Swedish Weavers Looking for US Weavers

[The following message was sent to several people in the Michigan weaving community. If you have any ideas or have an interest, see Jackie Fisher, or contact Anette Carlsson by e-mail.

We are a group from Sweden, 18 persons, who will visit Grand Rapids and Convergence 06/27- 07/02.

We have a long-felt want to meet American women (or men) with their own looms. I think it is nice to meet people in "everyday life." We are also interested in having someone come and talk to our little group some evening.

Do you think this is something you can help us with? Looking forward to hear from you soon!

Best Regards

Anette Carlsson
anette.123@glocalnet.net
Swedish Association of Handweavers